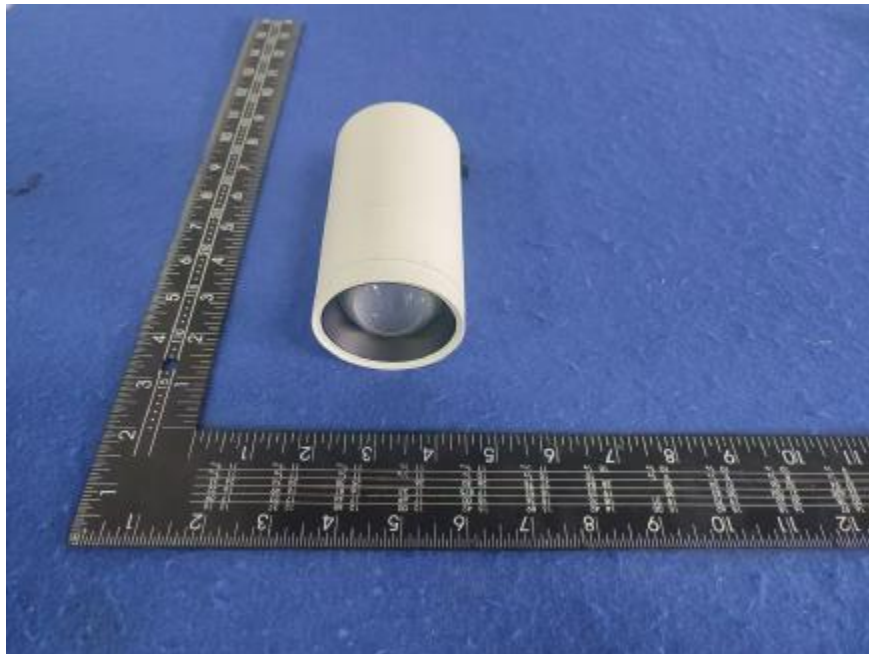


Luminaire Photograph



Light Output Ratio:	55.7%	
Luminaire Power:	14.55 W	
SHR Nominal:	0.50	Calculated using the TM5
SHR Maximum:	0.55	fine grid method.

C Range: 0 - 360DEG
C Interval: 30.0DEG
Test Speed: HIGH
Temperature: 25.3 °C
Operators: zoe
Test Date: 2025-1-10

γ Range: 0 - 180DEG
γ Interval: 1.0DEG
Test System: EVERFINE GO-SPEX500_V1 SYSTEM V2.00.461
Humidity: 65.0%
Test Distance: 3.160m [K=1.0000]
Remarks: LAMP: BXRE-30H1000-A-83 Ra: 95
LENS: PM-1100 40R
NOT DRIVER: 48V
30minutes warm-up

LUMINOUS INTENSITY DISTRIBUTION DIAGRAM

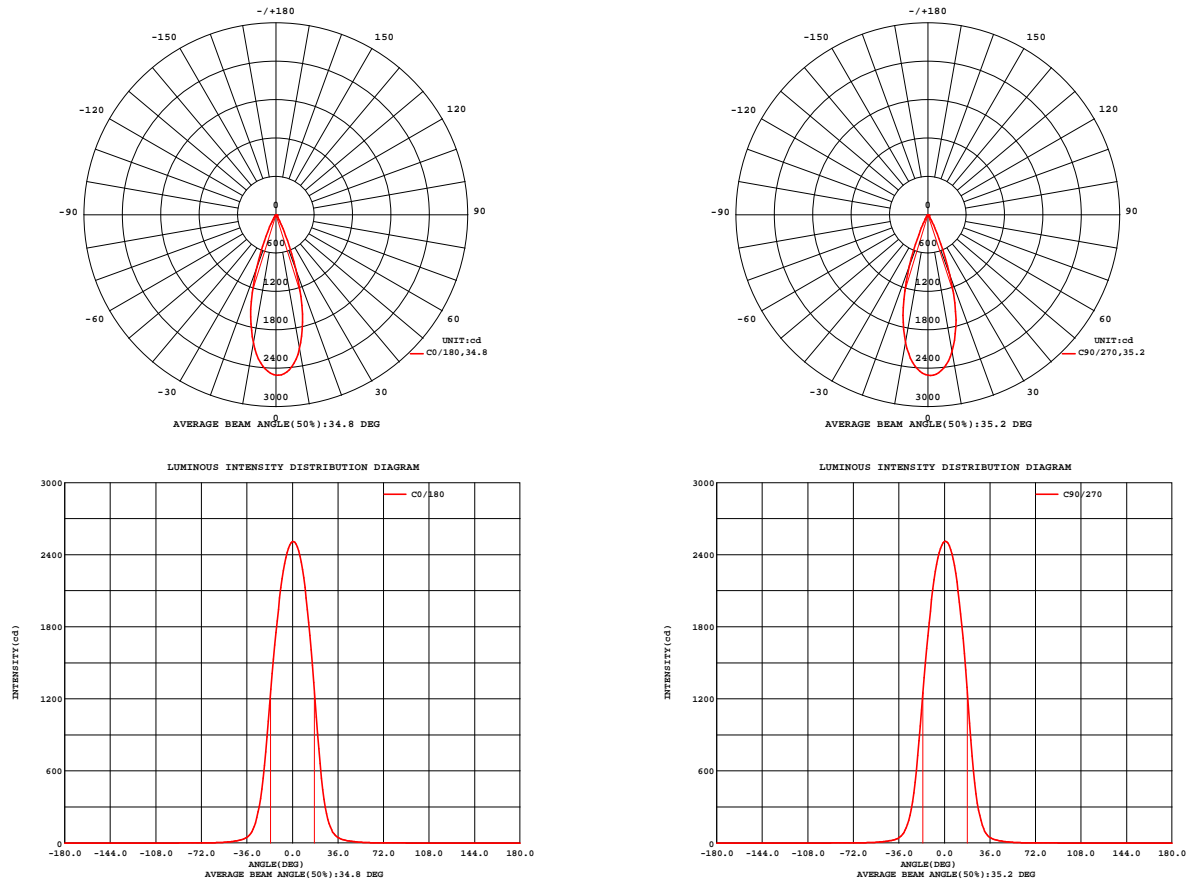


Fig. C0/C180

Fig. C90/C270

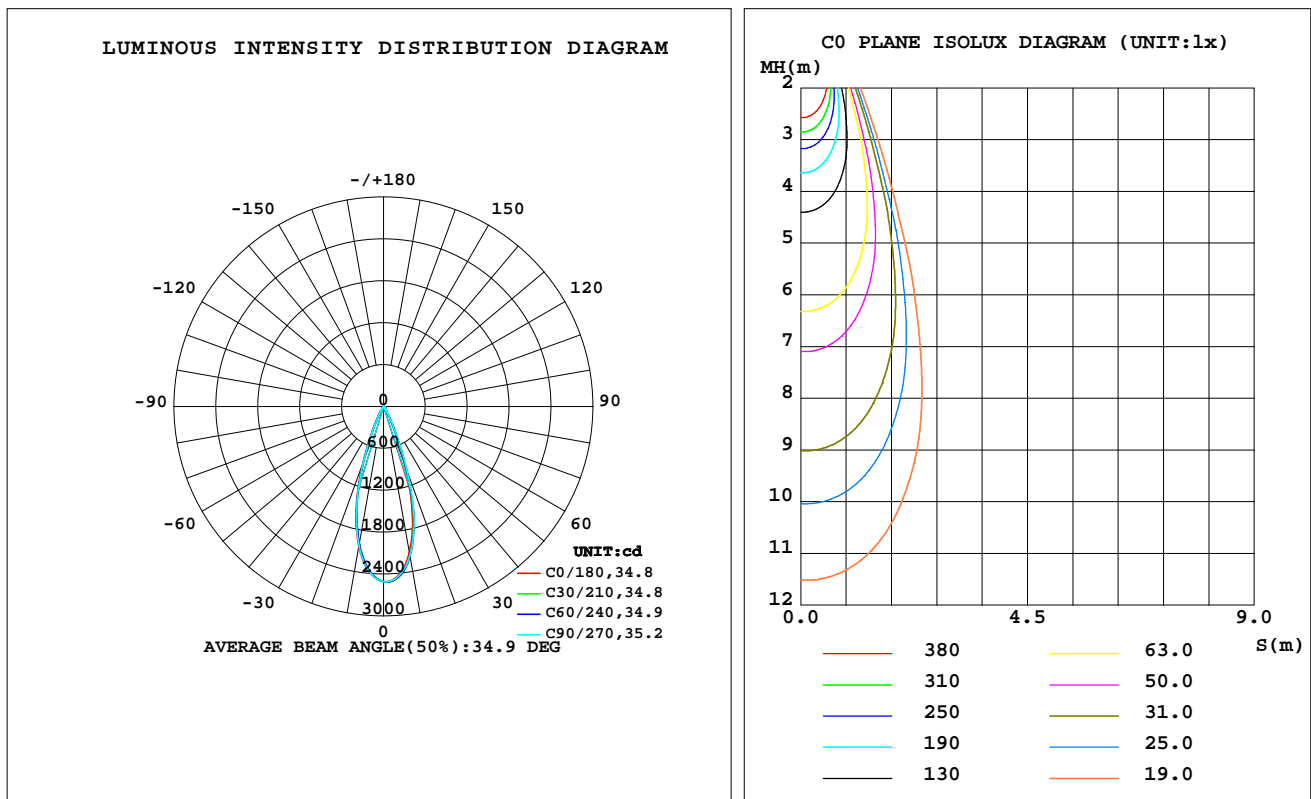
C Range: 0 - 360DEG
C Interval: 30.0DEG
Test Speed: HIGH
Temperature: 25.3 °C
Operators: zoe
Test Date: 2025-1-10

γ Range: 0 - 180DEG
 γ Interval: 1.0DEG
Test System: EVERFINE GO-SPEX500_V1 SYSTEM V2.00.461
Humidity: 65.0%
Test Distance: 3.160m [K=1.0000]
Remarks: LAMP: BXRE-30H1000-A-83 Ra: 95
LENS: PM-1100 40R
NOT DRIVER: 48V
30minutes warm-up

LUMINAIRE PHOTOMETRIC TEST REPORT

Test:U:47.997V I:0.3031A P:14.548W PF:1.0000 Freq:0Hz Lamp Flux:1597.41x1 lm		
NAME: OZ48-SBZ-64	TYPE:	WEIGHT:
SPEC.: 3000K	DIM.:	SERIAL No.: 2501100050
MFR.: RISE	SUR.: 0.00246176m2	Shielding Angle:

DATA OF LAMP		PHOTOMETRIC DATA Eff: 61.18 lm/W			
MODEL	Brideglux	I _{max} (cd)	2514	S/MH(C0/180)	0.54
NOMINAL POWER(W)	15	LOR(%)	55.7	S/MH(C90/270)	0.53
RATED VOLTAGE(V)	48	TOTAL FLUX(lm)	889.98	η UP,DN(C0-180)	0.0,28.7
NOMINAL FLUX(lm)	1597.41	CIE CLASS	DIRECT	η UP,DN(C180-360)	0.0,27.0
LAMPS INSIDE	1	η up(%)	0.0	CIBSE SHR NOM	0.50
TEST VOLTAGE(V)	48	η down(%)	55.7	CIBSE SHR MAX	0.55



C Range: 0 - 360DEG
C Interval: 30.0DEG
Test Speed: HIGH
Temperature:25.3℃
Operators:zoe
Test Date:2025-1-10

γ Range: 0 - 180DEG
γ Interval: 1.0DEG
Test System:EVERFINE GO-SPEX500_V1 SYSTEM V2.00.461
Humidity:65.0%
Test Distance:3.160m [K=1.0000]
Remarks: LAMP:BXRE-30H1000-A-83 Ra:95
LENS:PM-1100 40R
NOT DRIVER:48V
30minutes warm-up

ZONAL FLUX DIAGRAM

ZONAL FLUX DIAGRAM:

γ	C0	C45	C90	C135	C180	C225	C270	C315	γ	Φ zone	Φ total	%lum,lamp
10	2127	2177	2173	2101	2040	2002	2027	2095	0- 10	219.8	219.8	24.7,13.8
20	908.2	966.9	998.9	939.5	882.7	837.2	851.2	910.0	10- 20	422.5	642.3	72.2,40.2
30	133.4	139.8	146.7	145.6	138.1	128.2	127.0	134.4	20- 30	187.0	829.3	93.2,51.9
40	27.58	28.36	27.32	27.87	27.32	27.09	25.52	26.61	30- 40	38.70	868.0	97.5,54.3
50	9.625	9.864	9.356	9.428	9.108	9.134	9.209	9.564	40- 50	13.01	881.1	99,55.2
60	3.098	3.074	2.964	2.954	2.860	2.873	2.976	3.110	50- 60	4.937	886.0	99.6,55.5
70	1.400	1.338	1.291	1.339	1.341	1.396	1.473	1.447	60- 70	1.906	887.9	99.8,55.6
80	1.103	1.026	0.9848	1.001	1.033	1.092	1.152	1.145	70- 80	1.299	889.2	99.9,55.7
90	0	0	0	0	0	0	0	0	80- 90	0.7824	890.0	100,55.7
100	0	0	0	0	0	0	0	0	90-100	0	890.0	100,55.7
110	0	0	0	0	0	0	0	0	100-110	0	890.0	100,55.7
120	0	0	0	0	0	0	0	0	110-120	0	890.0	100,55.7
130	0	0	0	0	0	0	0	0	120-130	0	890.0	100,55.7
140	0	0	0	0	0	0	0	0	130-140	0	890.0	100,55.7
150	0	0	0	0	0	0	0	0	140-150	0	890.0	100,55.7
160	0	0	0	0	0	0	0	0	150-160	0	890.0	100,55.7
170	0	0	0	0	0	0	0	0	160-170	0	890.0	100,55.7
180	0	0	0	0	0	0	0	0	170-180	0	890.0	100,55.7
DEG	LUMINOUS INTENSITY:cd									UNIT:lm		

C Range: 0 - 360DEG
C Interval: 30.0DEG
Test Speed: HIGH
Temperature:25.3℃
Operators:zoe
Test Date:2025-1-10

γ Range: 0 - 180DEG
 γ Interval: 1.0DEG
Test System:EVERFINE GO-SPEX500_V1 SYSTEM V2.00.461
Humidity:65.0%
Test Distance:3.160m [K=1.0000]
Remarks: LAMP:BXRE-30H1000-A-83 Ra:95
LENS:PM-1100 40R
NOT DRIVER:48V
30minutes warm-up

LUMINANCE LIMITATION CURVES

Test:U:47.997V I:0.3031A P:14.548W PF:1.0000 Freq:0Hz
Lamp Flux:1597.41x1 lm

NAME: OZ48-SBZ-64

TYPE:

WEIGHT:

SPEC.: 3000K

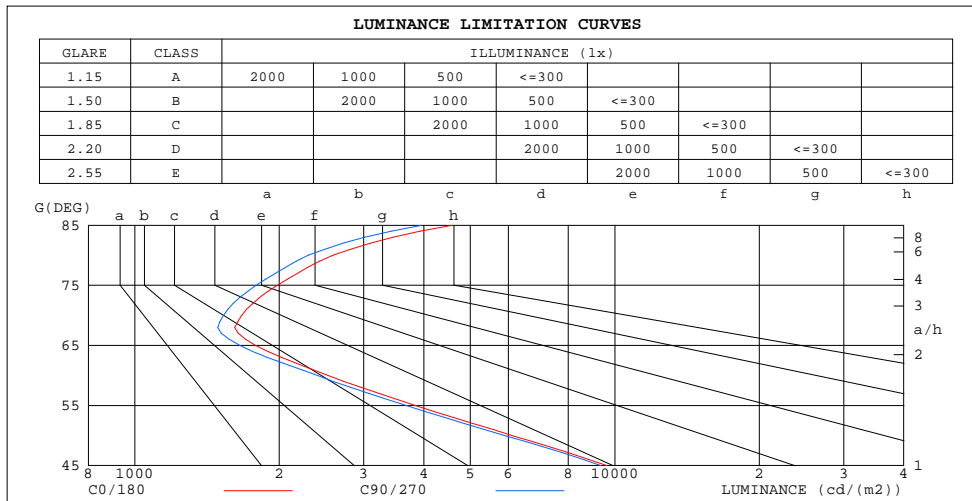
DIM.:

SERIAL No.: 2501100050

MFR.: RISE

SUR.: 0.00246176m2

Shielding Angle:



LUMINANCE cd/(m2)		
G(180)	G(270)	
85	4577	3951
80	2592	2300
75	1984	1790
70	1670	1531
65	1784	1654
60	2528	2404
55	3848	3682
50	6111	5903
45	9644	9367

C Range: 0 - 360DEG
C Interval: 30.0DEG
Test Speed: HIGH
Temperature:25.3℃
Operators:zoe
Test Date:2025-1-10

γ Range: 0 - 180DEG
γ Interval: 1.0DEG
Test System:EVERFINE GO-SPEX500_V1 SYSTEM V2.00.461
Humidity:65.0%
Test Distance:3.160m [K=1.0000]
Remarks: LAMP:BXRE-30H1000-A-83 Ra:95
LENS:PM-1100 40R
NOT DRIVER:48V
30minutes warm-up

CU AND LUMINAIRE BUDGETARY ESTIMATE DIAGRAM

Test:U:47.997V I:0.3031A P:14.548W PF:1.0000 Freq:0Hz
Lamp Flux:1597.4lx1 lm

NAME: OZ48-SBZ-64

TYPE:

WEIGHT:

SPEC.: 3000K

DIM.:

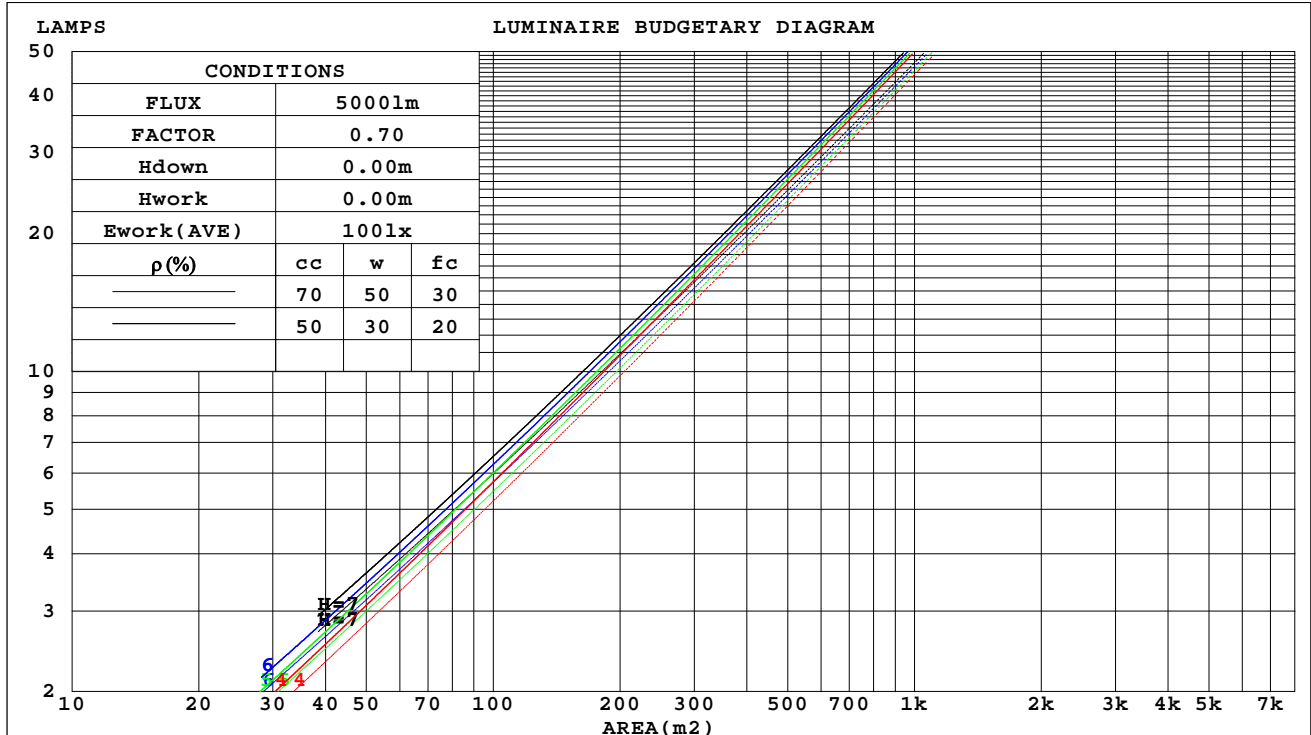
SERIAL No.: 2501100050

MFR.: RISE

SUR.: 0.00246176m2

Shielding Angle:

ρ_{cc}	80%			70%			50%			30%			10%			0
ρ_w	50%	30%	10%	50%	30%	10%	50%	30%	10%	50%	30%	10%	50%	30%	10%	0
ρ_{fc}	20%			20%			20%			20%			20%			0
RCR	RCR:Room Cavity Ratio															



C Range: 0 - 360DEG
C Interval: 30.0DEG
Test Speed: HIGH
Temperature:25.3℃
Operators:zoe
Test Date:2025-1-10

γ Range: 0 - 180DEG
 γ Interval: 1.0DEG
Test System:EVERFINE GO-SPEX500_V1 SYSTEM V2.00.461
Humidity:65.0%
Test Distance:3.160m [K=1.0000]
Remarks: LAMP:BXRE-30H1000-A-83 Ra:95
LENS:PM-1100 40R
NOT DRIVER:48V
30minutes warm-up

WEC AND CCEC

Test:U:47.997V I:0.3031A P:14.548W PF:1.0000 Freq:0Hz Lamp Flux:1597.4lx1 lm		
NAME: OZ48-SBZ-64	TYPE:	WEIGHT:
SPEC.: 3000K	DIM.:	SERIAL No.: 2501100050
MFR.: RISE	SUR.: 0.00246176m2	Shielding Angle:

pcc	80%			70%			50%			30%			10%			0
pw	50%	30%	10%	50%	30%	10%	50%	30%	10%	50%	30%	10%	50%	30%	10%	0
pfc	20%			20%			20%			20%			20%			0
RCR	RCR:Room Cavity Ratio						Wall Exitance Coefficients(WEC)									
0.0																
1.0	.082	.047	.015	.079	.045	.014	.072	.041	.013	.065	.038	.012	.060	.035	.011	
2.0	.077	.042	.013	.074	.041	.013	.068	.038	.012	.063	.035	.011	.058	.033	.010	
3.0	.072	.038	.011	.069	.037	.011	.065	.035	.011	.060	.033	.010	.056	.031	.010	
4.0	.068	.035	.010	.066	.034	.010	.061	.033	.010	.058	.031	.009	.054	.029	.009	
5.0	.064	.033	.009	.062	.032	.009	.059	.031	.009	.055	.029	.009	.052	.028	.008	
6.0	.061	.030	.009	.059	.030	.009	.056	.029	.008	.053	.028	.008	.051	.027	.008	
7.0	.058	.029	.008	.057	.028	.008	.054	.027	.008	.051	.026	.008	.049	.025	.007	
8.0	.055	.027	.008	.054	.027	.008	.052	.026	.007	.050	.025	.007	.048	.024	.007	
9.0	.053	.026	.007	.052	.025	.007	.050	.025	.007	.048	.024	.007	.046	.023	.007	
10.0	.051	.024	.007	.050	.024	.007	.048	.024	.007	.046	.023	.007	.045	.022	.006	

pcc	80%			70%			50%			30%			10%			0	
pw	50%	30%	10%	50%	30%	10%	50%	30%	10%	50%	30%	10%	50%	30%	10%	0	
pfc	20%			20%			20%			20%			20%			0	
RCR	RCR:Room Cavity Ratio						Ceiling Cavity Exitance Coefficients(CCEC)										
0.0	.106	.106	.106	.091	.091	.091	.062	.062	.062	.036	.036	.036	.011	.011	.011		
1.0	.094	.088	.082	.081	.075	.071	.055	.052	.049	.032	.030	.028	.010	.010	.009		
2.0	.085	.074	.065	.072	.064	.056	.050	.044	.039	.029	.026	.023	.009	.008	.007		
3.0	.077	.063	.052	.066	.054	.046	.045	.038	.032	.026	.022	.019	.008	.007	.006		
4.0	.070	.055	.043	.060	.047	.037	.041	.033	.026	.024	.019	.016	.008	.006	.005		
5.0	.064	.048	.036	.055	.041	.031	.038	.029	.022	.022	.017	.013	.007	.006	.004		
6.0	.060	.042	.030	.051	.037	.026	.035	.026	.019	.020	.015	.011	.007	.005	.004		
7.0	.055	.038	.026	.048	.033	.022	.033	.023	.016	.019	.014	.009	.006	.004	.003		
8.0	.052	.034	.022	.045	.030	.019	.031	.021	.014	.018	.012	.008	.006	.004	.003		
9.0	.049	.031	.019	.042	.027	.017	.029	.019	.012	.017	.011	.007	.006	.004	.002		
10.0	.046	.029	.017	.040	.025	.015	.028	.017	.010	.016	.010	.006	.005	.003	.002		

C Range: 0 - 360DEG
C Interval: 30.0DEG
Test Speed: HIGH
Temperature:25.3℃
Operators:zoe
Test Date:2025-1-10

γ Range: 0 - 180DEG
γ Interval: 1.0DEG
Test System:EVERFINE GO-SPEX500_V1 SYSTEM V2.00.461
Humidity:65.0%
Test Distance:3.160m [K=1.0000]
Remarks: LAMP:BXRE-30H1000-A-83 Ra:95
LENS:PM-1100 40R
NOT DRIVER:48V
30minutes warm-up

UGR(Unified Glare Rating) Table

Test:U:47.997V I:0.3031A P:14.548W PF:1.0000 Freq:0Hz Lamp Flux:1597.4lx1 lm										
NAME: OZ48-SBZ-64					TYPE:			WEIGHT:		
SPEC.: 3000K					DIM.:			SERIAL No.: 2501100050		
MFR.: RISE					SUR.: 0.00246176m2			Shielding Angle:		
ceiling/cavity	0.7	0.7	0.5	0.5	0.3	0.7	0.7	0.5	0.5	0.3
walls	0.5	0.3	0.5	0.3	0.3	0.5	0.3	0.5	0.3	0.3
working plane	0.2	0.2	0.2	0.2	0.2	0.2	0.2	0.2	0.2	0.2
Room dimensions	Viewed crosswise					Viewed endwise				
x = 2H y = 2H	9.3	10.0	9.5	10.2	10.3	9.3	10.0	9.5	10.2	10.3
3H	9.3	10.0	9.5	10.1	10.3	9.3	9.9	9.5	10.1	10.3
4H	9.3	9.9	9.6	10.1	10.4	9.3	9.9	9.5	10.1	10.3
6H	9.4	10.0	9.7	10.2	10.4	9.3	9.9	9.6	10.1	10.4
8H	9.5	10.0	9.7	10.3	10.5	9.4	9.9	9.7	10.2	10.4
12H	9.6	10.1	9.9	10.4	10.7	9.5	10.0	9.8	10.3	10.5
4H 2H	9.2	9.8	9.4	10.0	10.2	9.2	9.8	9.4	10.0	10.2
3H	9.2	9.7	9.5	10.0	10.3	9.1	9.7	9.5	10.0	10.2
4H	9.2	9.8	9.6	10.0	10.3	9.2	9.7	9.5	10.0	10.3
6H	9.4	9.9	9.8	10.2	10.5	9.3	9.8	9.7	10.1	10.4
8H	9.6	10.0	9.9	10.3	10.7	9.4	9.9	9.8	10.2	10.6
12H	9.8	10.2	10.2	10.6	10.9	9.6	10.0	10.0	10.4	10.8
8H 4H	9.2	9.6	9.6	10.0	10.3	9.1	9.6	9.5	9.9	10.3
6H	9.5	9.8	9.9	10.2	10.6	9.4	9.7	9.8	10.1	10.5
8H	9.7	10.0	10.1	10.4	10.9	9.6	9.9	10.0	10.3	10.7
12H	10.1	10.4	10.6	10.8	11.3	9.9	10.2	10.4	10.6	11.1
12H 4H	9.2	9.5	9.6	9.9	10.3	9.1	9.5	9.5	9.9	10.3
6H	9.5	9.8	9.9	10.2	10.6	9.4	9.7	9.8	10.1	10.5
8H	9.8	10.0	10.2	10.5	10.9	9.6	9.9	10.1	10.3	10.8
Variations with the observer position at spacings(CIE Pub.117):										
S = 1.0H	+ 1.7 / - 2.4					+ 1.9 / - 2.6				
1.5H	+ 2.9 / - 2.2					+ 3.1 / - 2.3				
2.0H	+ 2.8 / - 1.7					+ 2.9 / - 1.8				

CIE Pub.117, 1597 lm Total Lamp Luminous Flux Correct (8log(F/F0) = 1.6)
Area: 0.00246176 m2

C Range: 0 - 360DEG
C Interval: 30.0DEG
Test Speed: HIGH
Temperature:25.3℃
Operators:zoe
Test Date:2025-1-10

γ Range: 0 - 180DEG
γ Interval: 1.0DEG
Test System:EVERFINE GO-SPEX500_V1 SYSTEM V2.00.461
Humidity:65.0%
Test Distance:3.160m [K=1.0000]
Remarks: LAMP:BXRE-30H1000-A-83 Ra:95
LENS:PM-1100 40R
NOT DRIVER:48V
30minutes warm-up

UTILIZATION FACTORS TABLE

Test:U:47.997V I:0.3031A P:14.548W PF:1.0000 Freq:0Hz Lamp Flux:1597.4lx1 lm		
NAME: OZ48-SBZ-64	TYPE:	WEIGHT:
SPEC.: 3000K	DIM.:	SERIAL No.: 2501100050
MFR.: RISE	SUR.: 0.00246176m2	Shielding Angle:

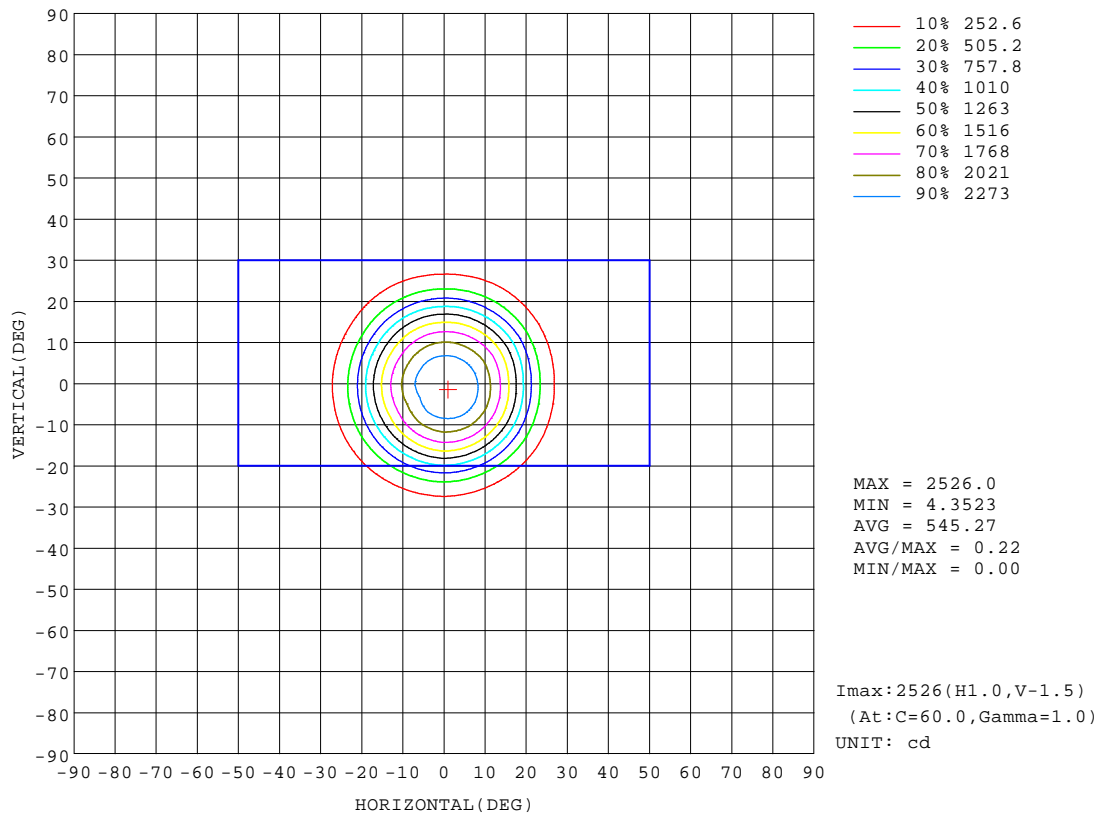
REFLECTANCE										
Ceiling	0.8	0.8	0.8	0.7	0.7	0.7	0.5	0.5	0.5	0
Walls	0.7	0.5	0.3	0.7	0.5	0.3	0.7	0.5	0.3	0
Working plane	0.2	0.2	0.2	0.2	0.2	0.2	0.2	0.2	0.2	0
ROOM INDEX	UTILIZATION FACTORS(PERCENT) $k(RI) \times RCR = 5$									
k = 0.60	50	47	45	50	47	45	49	47	45	43
0.80	54	51	49	54	51	49	53	51	49	47
1.00	56	53	52	56	53	51	55	53	51	49
1.25	58	56	54	58	55	54	57	55	53	51
1.50	60	57	56	59	57	55	58	56	55	52
2.00	61	59	57	60	58	57	59	57	56	53
2.50	62	60	58	61	59	58	59	58	57	54
3.00	63	61	59	62	60	59	60	59	58	54
4.00	64	62	61	63	61	60	61	60	59	55
5.00	64	63	62	63	62	61	61	60	60	55
ROOM INDEX	UF(total)									Direct
According to DIN EN 13032-2 2004			Suspended					SHRNOM = 1.25		

C Range: 0 - 360DEG
C Interval: 30.0DEG
Test Speed: HIGH
Temperature:25.3℃
Operators:zoe
Test Date:2025-1-10

γ Range: 0 - 180DEG
γ Interval: 1.0DEG
Test System:EVERFINE GO-SPEX500_V1 SYSTEM V2.00.461
Humidity:65.0%
Test Distance:3.160m [K=1.0000]
Remarks: LAMP:BXRE-30H1000-A-83 Ra:95
LENS:PM-1100 40R
NOT DRIVER:48V
30minutes warm-up

ISOCANDELA DIAGRAM

Test:U:47.997V I:0.3031A P:14.548W PF:1.0000 Freq:0Hz Lamp Flux:1597.41x1 lm		
NAME: OZ48-SBZ-64	TYPE:	WEIGHT:
SPEC.: 3000K	DIM.:	SERIAL No.: 2501100050
MFR.: RISE	SUR.: 0.00246176m2	Shielding Angle:

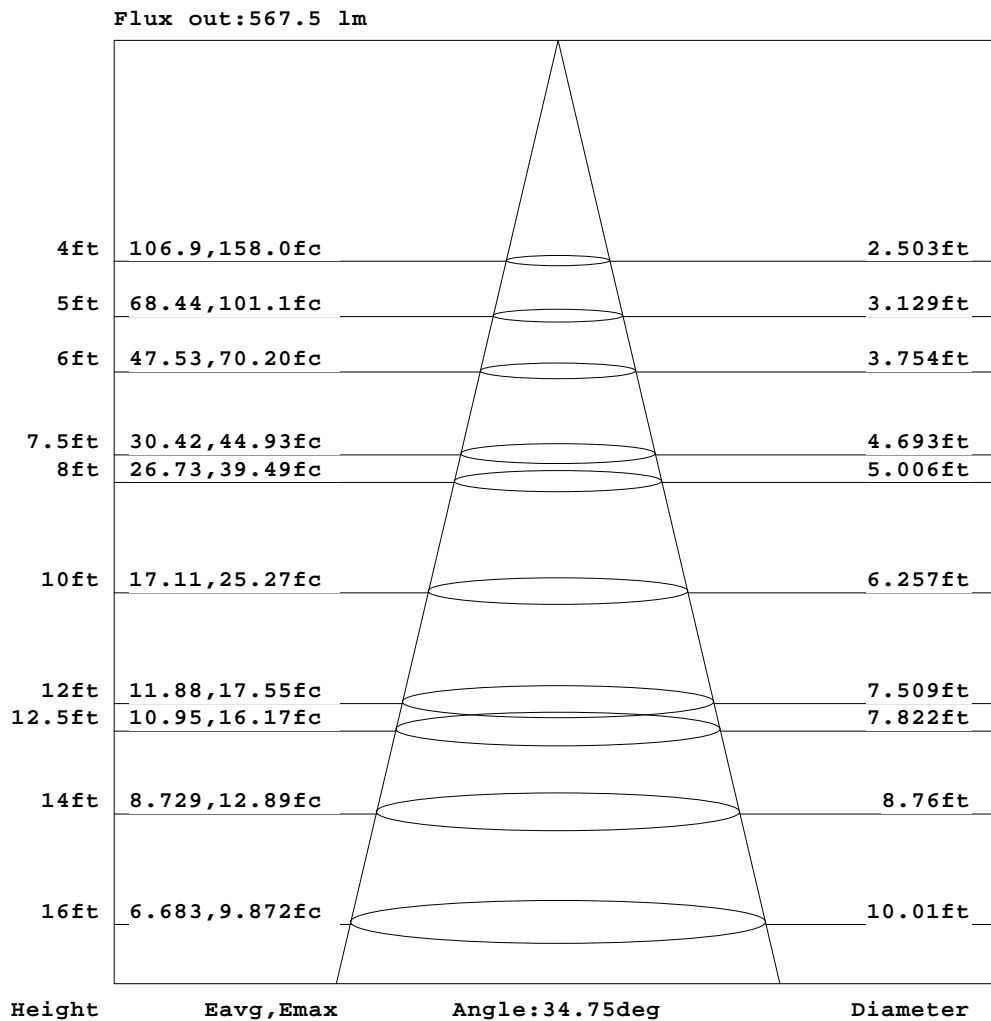


C Range: 0 - 360DEG
C Interval: 30.0DEG
Test Speed: HIGH
Temperature:25.3℃
Operators:zoe
Test Date:2025-1-10

γ Range: 0 - 180DEG
γ Interval: 1.0DEG
Test System:EVERFINE GO-SPEX500_V1 SYSTEM V2.00.461
Humidity:65.0%
Test Distance:3.160m [K=1.0000]
Remarks: LAMP:BXRE-30H1000-A-83 Ra:95
LENS:PM-1100 40R
NOT DRIVER:48V
30minutes warm-up

AAI Figure

Test:U:47.997V I:0.3031A P:14.548W PF:1.0000 Freq:0Hz Lamp Flux:1597.4lx1 lm		
NAME: OZ48-SBZ-64	TYPE:	WEIGHT:
SPEC.: 3000K	DIM.:	SERIAL No.: 2501100050
MFR.: RISE	SUR.: 0.00246176m2	Shielding Angle:



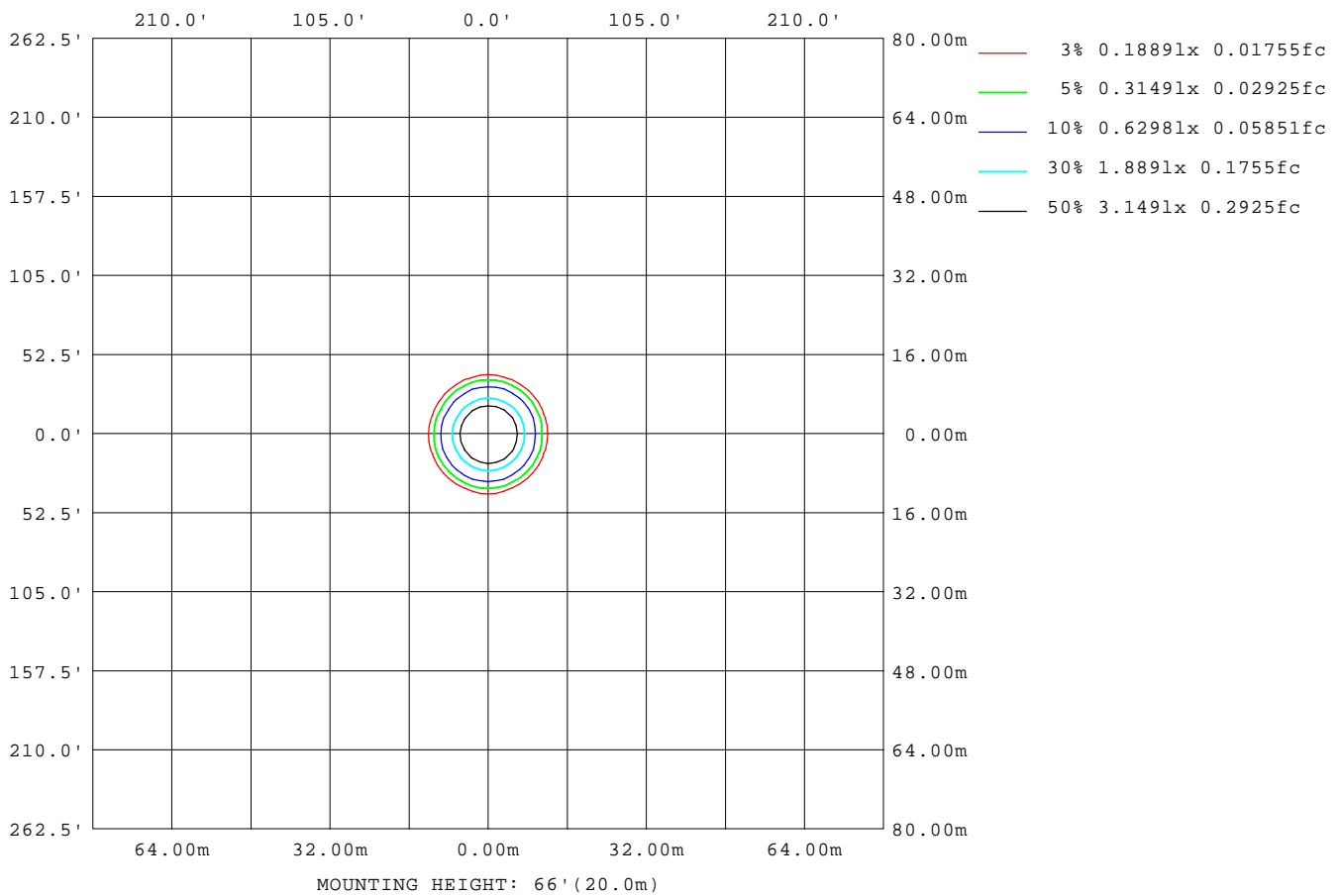
Note: The Curves indicate the illuminated area and the average illumination when the luminaire is at different distance.

C Range: 0 - 360DEG
C Interval: 30.0DEG
Test Speed: HIGH
Temperature: 25.3 °C
Operators: zoe
Test Date: 2025-1-10

γ Range: 0 - 180DEG
γ Interval: 1.0DEG
Test System: EVERFINE GO-SPEX500_V1 SYSTEM V2.00.461
Humidity: 65.0%
Test Distance: 3.160m [K=1.0000]
Remarks: LAMP: BXRE-30H1000-A-83 Ra: 95
LENS: PM-1100 40R
NOT DRIVER: 48V
30minutes warm-up

ISOLUX DIAGRAM

Test:U:47.997V I:0.3031A P:14.548W PF:1.0000 Freq:0Hz Lamp Flux:1597.4lx1 lm		
NAME: OZ48-SBZ-64	TYPE:	WEIGHT:
SPEC.: 3000K	DIM.:	SERIAL No.: 2501100050
MFR.: RISE	SUR.: 0.00246176m2	Shielding Angle:



C Range: 0 - 360DEG
C Interval: 30.0DEG
Test Speed: HIGH
Temperature:25.3 °C
Operators:zoe
Test Date:2025-1-10

γ Range: 0 - 180DEG
γ Interval: 1.0DEG
Test System:EVERFINE GO-SPEX500_V1 SYSTEM V2.00.461
Humidity:65.0%
Test Distance:3.160m [K=1.0000]
Remarks: LAMP:BXRE-30H1000-A-83 Ra:95
LENS:PM-1100 40R
NOT DRIVER:48V
30minutes warm-up

LED Avg.L Report

Test:U:47.997V I:0.3031A P:14.548W PF:1.0000 Freq:0Hz Lamp Flux:1597.41x1 lm		
NAME: OZ48-SBZ-64	TYPE:	WEIGHT:
SPEC.: 3000K	DIM.:	SERIAL No.: 2501100050
MFR.: RISE	SUR.: 0.00246176m2	Shielding Angle:

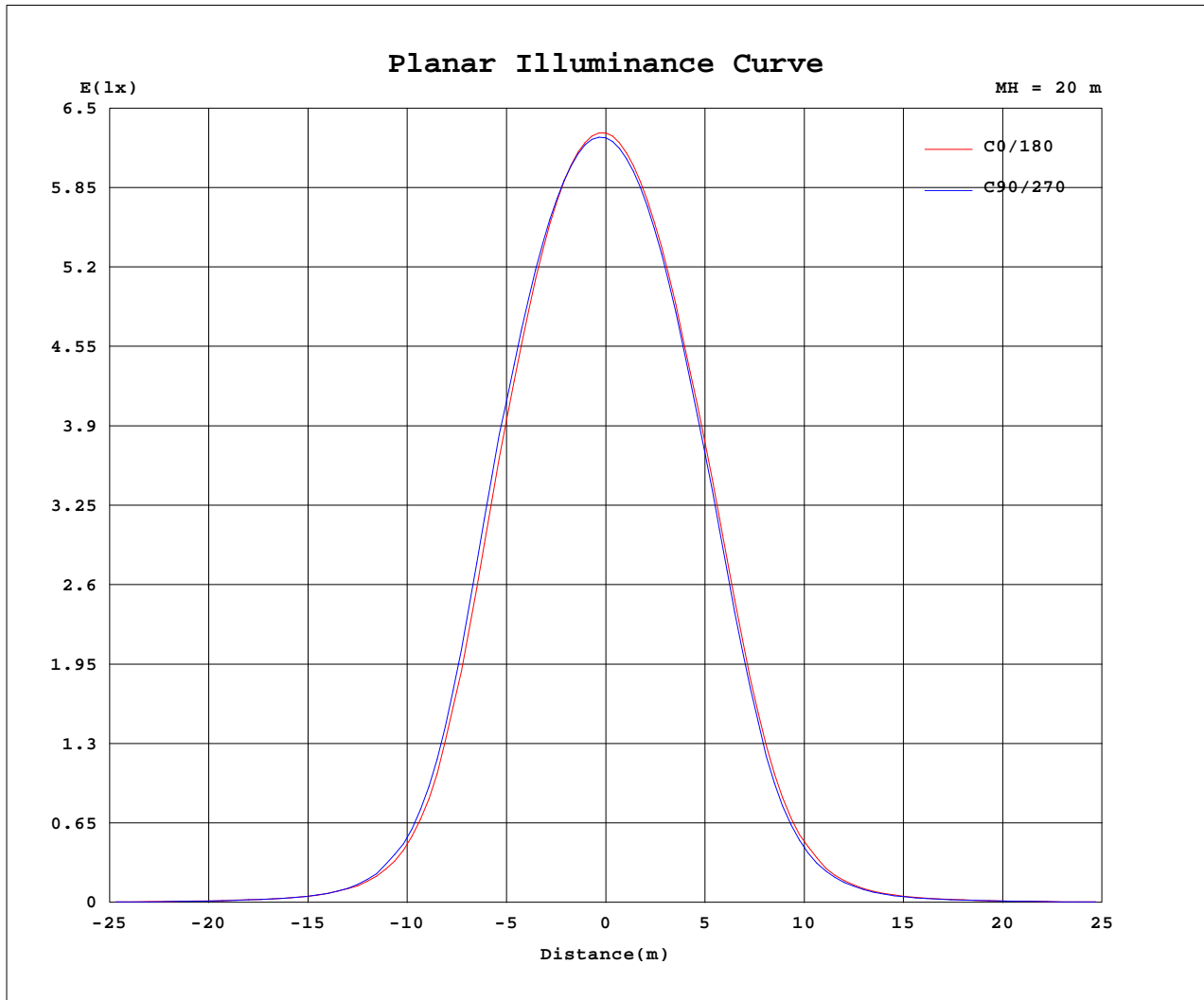
AvgL	cd/m2
L_0~180(65)av	1723
L_0~180(75)av	1931
L_0~180(85)av	4333
L_90~270(65)av	1719
L_90~270(75)av	1943
L_90~270(85)av	4267
L_45(65)av	1733
L_45(75)av	1940
L_45(85)av	4269

Standard: GB/T 29293-2012

C Range: 0 - 360DEG
C Interval: 30.0DEG
Test Speed: HIGH
Temperature:25.3℃
Operators:zoe
Test Date:2025-1-10

γ Range: 0 - 180DEG
γ Interval: 1.0DEG
Test System:EVERFINE GO-SPEX500_V1 SYSTEM V2.00.461
Humidity:65.0%
Test Distance:3.160m [K=1.0000]
Remarks: LAMP:BXRE-30H1000-A-83 Ra:95
LENS:PM-1100 40R
NOT DRIVER:48V
30minutes warm-up

Planar Illuminance Curve



C Range: 0 - 360DEG
 C Interval: 30.0DEG
 Test Speed: HIGH
 Temperature: 25.3 °C
 Operators: zoe
 Test Date: 2025-1-10

γ Range: 0 - 180DEG
 γ Interval: 1.0DEG
 Test System: EVERFINE GO-SPEX500_V1 SYSTEM V2.00.461
 Humidity: 65.0%
 Test Distance: 3.160m [K=1.0000]
 Remarks: LAMP: BXRE-30H1000-A-83 Ra: 95
 LENS: PM-1100 40R
 NOT DRIVER: 48V
 30minutes warm-up



LUMINOUS DISTRIBUTION INTENSITY DATA

Test:U:47.997V I:0.3031A P:14.548W PF:1.0000 Freq:0Hz Lamp Flux:1597.4lx1 lm		
NAME: OZ48-SBZ-64	TYPE:	WEIGHT:
SPEC.: 3000K	DIM.:	SERIAL No.: 2501100050
MFR.: RISE	SUR.: 0.00246176m2	Shielding Angle:

Table--1

UNIT: cd

C(DEG) γ (DEG)	0	30	60	90	120	150	180	210	240	270	300	330						
0	2507	2507	2507	2507	2507	2507	2507	2507	2507	2507	2507	2507						
5	2431	2453	2455	2443	2424	2389	2376	2358	2357	2371	2390	2429						
10	2127	2174	2181	2173	2130	2072	2040	2003	2001	2027	2055	2136						
15	1608	1676	1693	1704	1636	1576	1532	1483	1487	1502	1547	1630						
20	908	961	973	999	954	925	883	843	832	851	878	943						
25	365	386	387	409	395	396	370	341	341	343	360	382						
30	133	140	139	147	144	147	138	129	128	127	132	137						
35	54.2	56.4	55.6	55.9	54.8	57.9	55.4	53.4	53.2	50.8	51.4	54.2						
40	27.6	28.8	28.0	27.3	26.8	29.0	27.3	27.0	27.2	25.5	25.7	27.6						
45	16.7	17.5	17.0	16.3	16.0	17.2	16.2	16.0	16.1	15.6	15.8	16.9						
50	9.63	9.97	9.75	9.36	9.17	9.69	9.11	9.13	9.14	9.21	9.34	9.79						
55	5.41	5.52	5.37	5.21	5.06	5.32	5.00	4.97	5.06	5.14	5.34	5.50						
60	3.10	3.12	3.02	2.96	2.89	3.02	2.86	2.83	2.91	2.98	3.09	3.13						
65	1.85	1.83	1.77	1.72	1.71	1.81	1.74	1.75	1.80	1.85	1.89	1.85						
70	1.40	1.36	1.31	1.29	1.29	1.39	1.34	1.37	1.42	1.47	1.47	1.43						
75	1.26	1.22	1.17	1.14	1.14	1.23	1.20	1.23	1.28	1.33	1.33	1.29						
80	1.10	1.05	1.00	0.98	0.97	1.03	1.03	1.07	1.11	1.15	1.15	1.14						
85	0.98	0.93	0.87	0.85	0.83	0.88	0.88	0.90	0.94	0.98	0.99	1.00						
90	0.00	0.00	0.00	0.00	0.00	0.00	0.00	0.00	0.00	0.00	0.00	0.00						
95	0.00	0.00	0.00	0.00	0.00	0.00	0.00	0.00	0.00	0.00	0.00	0.00						
100	0.00	0.00	0.00	0.00	0.00	0.00	0.00	0.00	0.00	0.00	0.00	0.00						
105	0.00	0.00	0.00	0.00	0.00	0.00	0.00	0.00	0.00	0.00	0.00	0.00						
110	0.00	0.00	0.00	0.00	0.00	0.00	0.00	0.00	0.00	0.00	0.00	0.00						
115	0.00	0.00	0.00	0.00	0.00	0.00	0.00	0.00	0.00	0.00	0.00	0.00						
120	0.00	0.00	0.00	0.00	0.00	0.00	0.00	0.00	0.00	0.00	0.00	0.00						
125	0.00	0.00	0.00	0.00	0.00	0.00	0.00	0.00	0.00	0.00	0.00	0.00						
130	0.00	0.00	0.00	0.00	0.00	0.00	0.00	0.00	0.00	0.00	0.00	0.00						
135	0.00	0.00	0.00	0.00	0.00	0.00	0.00	0.00	0.00	0.00	0.00	0.00						
140	0.00	0.00	0.00	0.00	0.00	0.00	0.00	0.00	0.00	0.00	0.00	0.00						
145	0.00	0.00	0.00	0.00	0.00	0.00	0.00	0.00	0.00	0.00	0.00	0.00						
150	0.00	0.00	0.00	0.00	0.00	0.00	0.00	0.00	0.00	0.00	0.00	0.00						
155	0.00	0.00	0.00	0.00	0.00	0.00	0.00	0.00	0.00	0.00	0.00	0.00						
160	0.00	0.00	0.00	0.00	0.00	0.00	0.00	0.00	0.00	0.00	0.00	0.00						
165	0.00	0.00	0.00	0.00	0.00	0.00	0.00	0.00	0.00	0.00	0.00	0.00						
170	0.00	0.00	0.00	0.00	0.00	0.00	0.00	0.00	0.00	0.00	0.00	0.00						
175	0.00	0.00	0.00	0.00	0.00	0.00	0.00	0.00	0.00	0.00	0.00	0.00						
180	0.00	0.00	0.00	0.00	0.00	0.00	0.00	0.00	0.00	0.00	0.00	0.00						

C Range: 0 - 360DEG
C Interval: 30.0DEG
Test Speed: HIGH
Temperature:25.3℃
Operators:zoe
Test Date:2025-1-10

γ Range: 0 - 180DEG
γ Interval: 1.0DEG
Test System:EVERFINE GO-SPEX500_V1 SYSTEM V2.00.461
Humidity:65.0%
Test Distance:3.160m [K=1.0000]
Remarks: LAMP:BXRE-30H1000-A-83 Ra:95
LENS:PM-1100 40R
NOT DRIVER:48V
30minutes warm-up